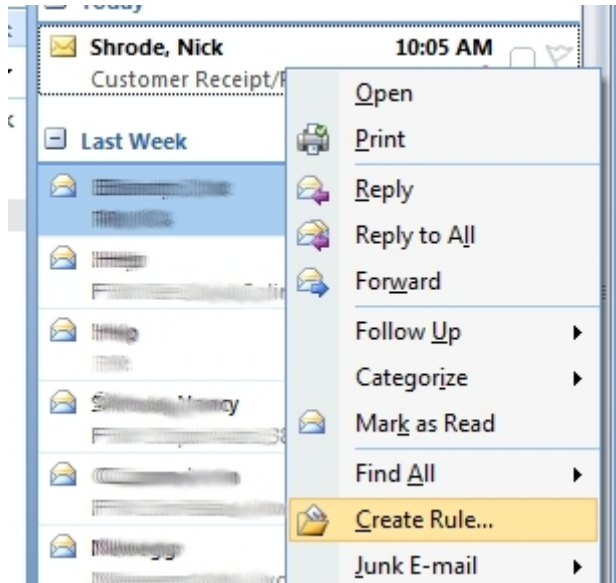
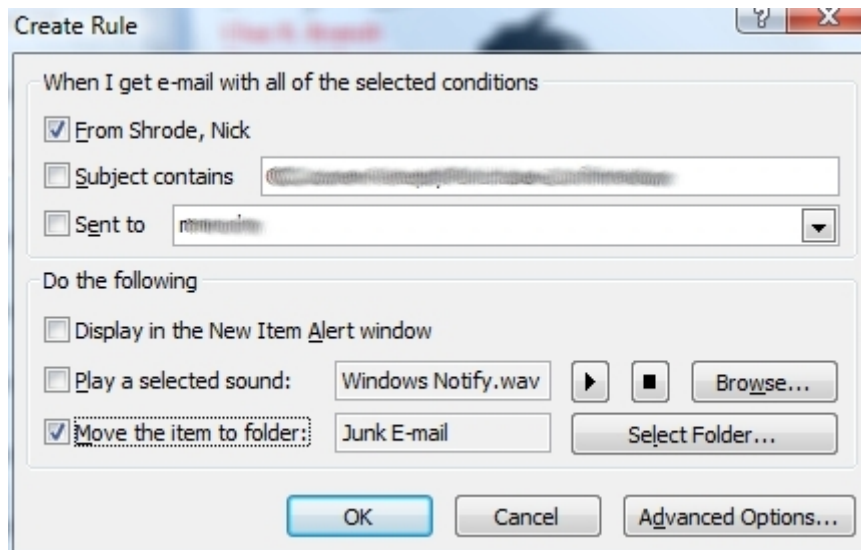


## Creating a Junk Email Filter for Spoofed Email

1. Wait for a spoofed email (an email from yourself) to show up in your inbox.
2. Right-click on the email and select "Create Rule"



3. In the new windows select "From Your Name" and " Move the item to folder: Junk Email"



4. Click okay and from now on all spoofed email will be sent to your junk filter.